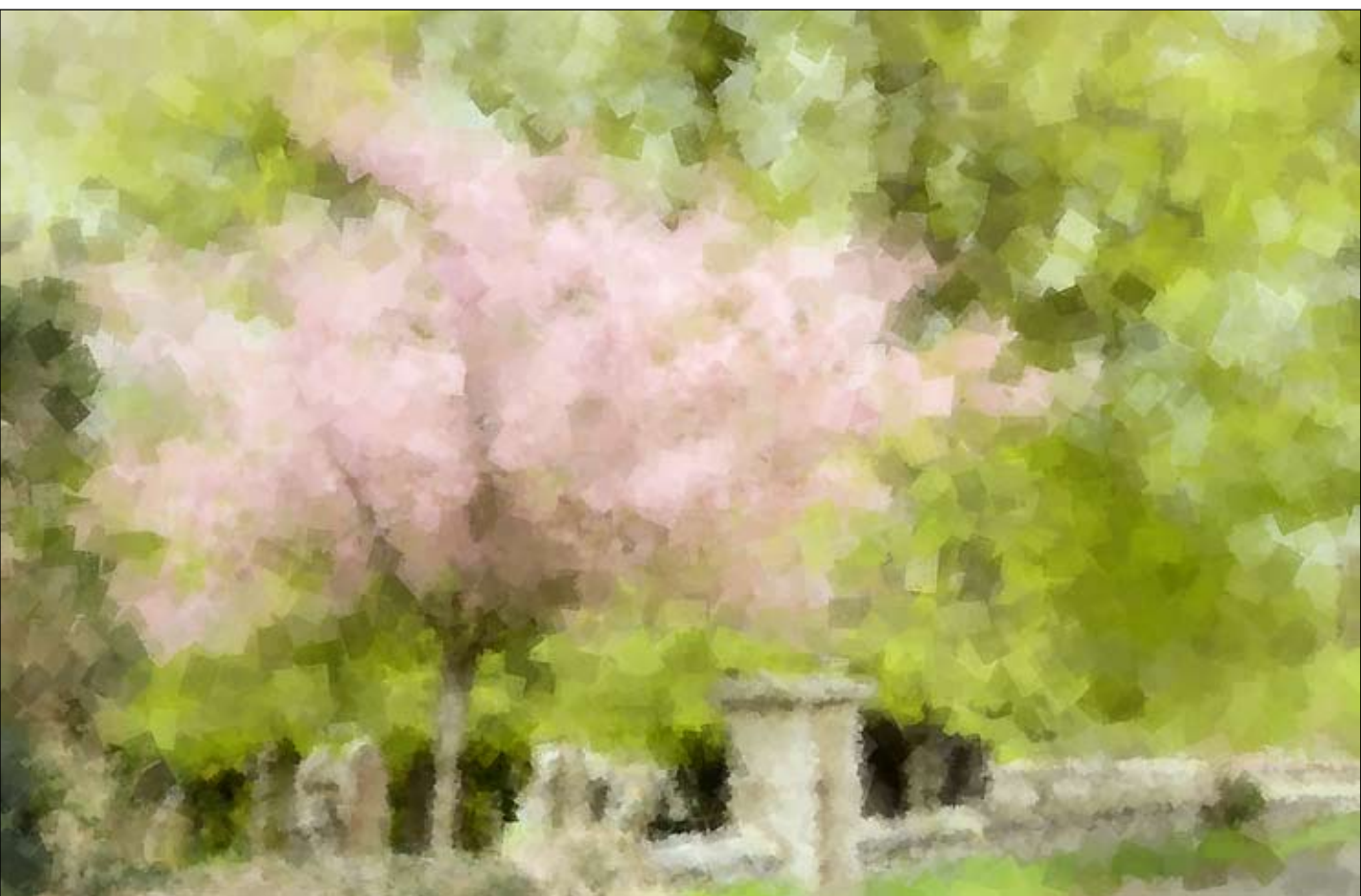


## **Step-by-Step Tutorials**



## **Sponges**

1. File> Open> Sponges - Cherry tree blossom.



2. Make a Quick Clone.
3. Turn off the Tracing paper as you will not need it for this painting.
4. Select the Sponges> Dense Sponge.
5. Size 60 opacity 82%, other settings on default.
6. Click the Clone Color option in the Colors palette.
7. Open the Auto-painting palette (Window> Auto-painting)
8. Click the Smart Stroke Painting option.
9. Start the auto-painting by clicking on the Play button.
10. Allow the auto-painting to continue for a few minutes or until all the canvas is covered. Stop the painting by clicking in the picture area or pressing the Stop button in the palette. If you want to continue simply press the Play button again.



Dense Sponge  
size 60

11. Make a new layer.

12. Change the brush size to 30 and run the auto-painting again.



Dense Sponge  
size 30

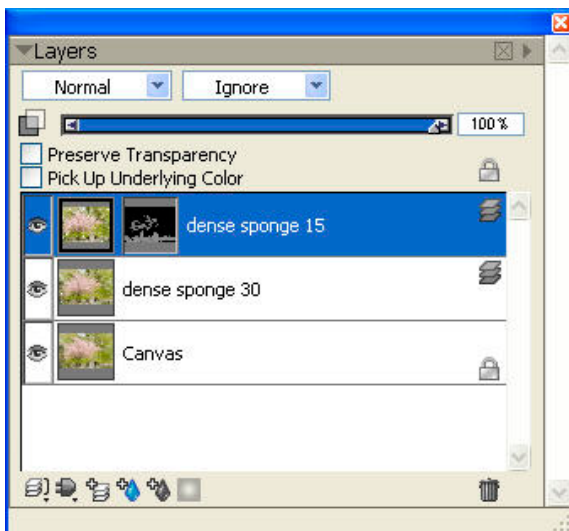
13. Make a new layer.

14. Change the brush size to 15 and run the auto-painting again.



Dense Sponge  
size 15

15. You should now have three layers of painting at different brush sizes.  
Turn off the top layer for the moment.
16. Adjust the layer opacity of the middle layer, you need a blend of the two layers, I choose 25% to just add a bit more textural variation.
17. Turn on the visibility of the top layer, click on the layer to make it active then make a layer mask.
18. Click on the Layer Mask to make it active and in the Colors palette select black as the foreground color. You will have to untick the Clone Color option to access the color wheel.
19. Edit> Fill> Fill with Current Color, this will fill the layer mask with black thereby completely hiding the layer. (Prior to Painter 11 the Fill command was in the Effects menu).
20. Return the brush to default settings (click the brush icon on the Properties bar).
21. Select white in the Colors palette and paint into the picture to reveal the top layer. Paint along the wall at the base to give more clarity to the shapes. Paint the trunk of the cherry tree and dab a few brush strokes in the blossom to add variety.
22. You will want to add some extra contrast and saturation so save this file and make a duplicate copy. This will enable you to return to it later if necessary. Drop all the layers to the canvas and use the controls in the Under-painting palette to adjust the tones and saturation to your liking.



This technique is a very easy one to complete and it can be done very quickly. You could make a selection and apply the more detailed cloning this way, but I find that having each type on a different layer and using layer masks and layer opacity to blend the layers gives far more flexibility and allows you to change your mind later on.