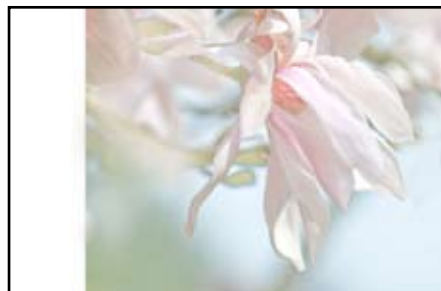


Step-by-Step Tutorials



Pastels

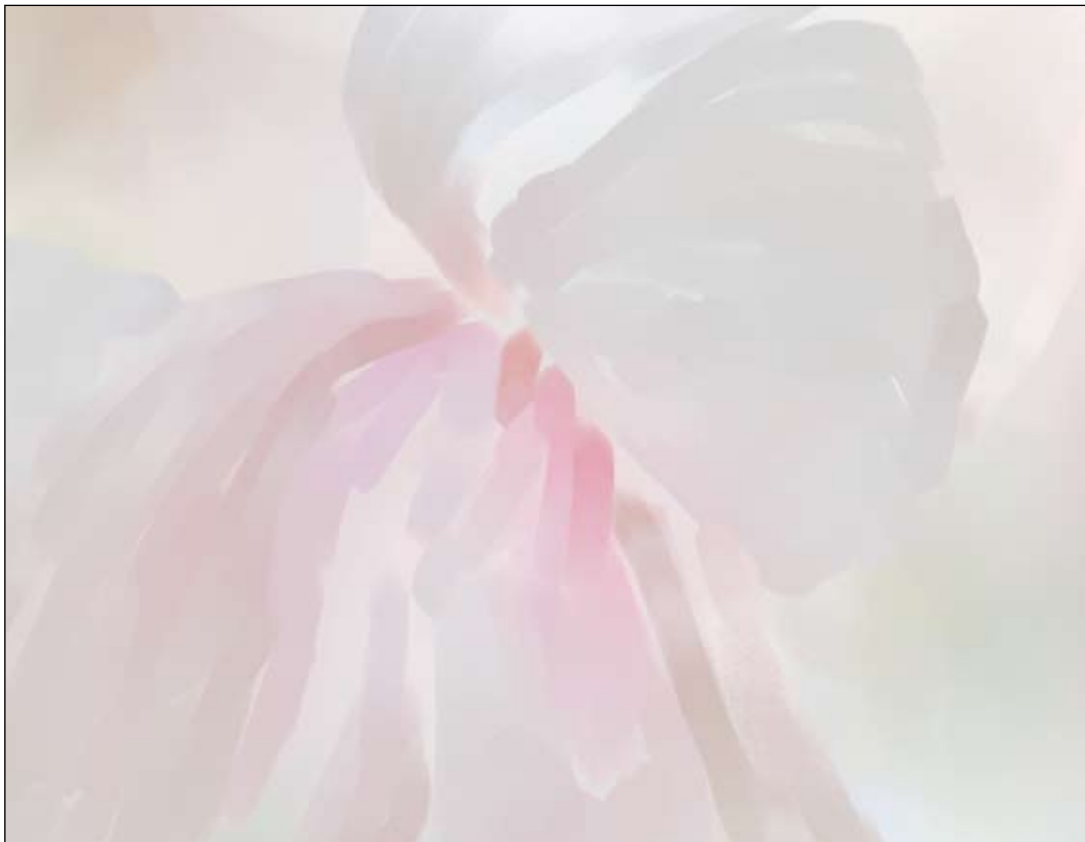
1. This picture is a little more complex than most in the chapter as it involves cloning from two separate originals. The two original photographs have been prepared prior to this project by making the canvas sizes the same and arranging the pictures roughly where they should appear in the final merged clone.
This is an important step when you are cloning from different originals as it is the easiest way to get everything in the right place.



2. File> Open> Pastels - Magnolia A and Magnolia B.
3. File> Quick Clone. (with Magnolia A the active document)
4. Select the Square X-Soft Pastel brush.
5. Return the brush to the default settings.
6. Brush size 137 and opacity 7%.
7. In the Colors palette click the Clone Color option.

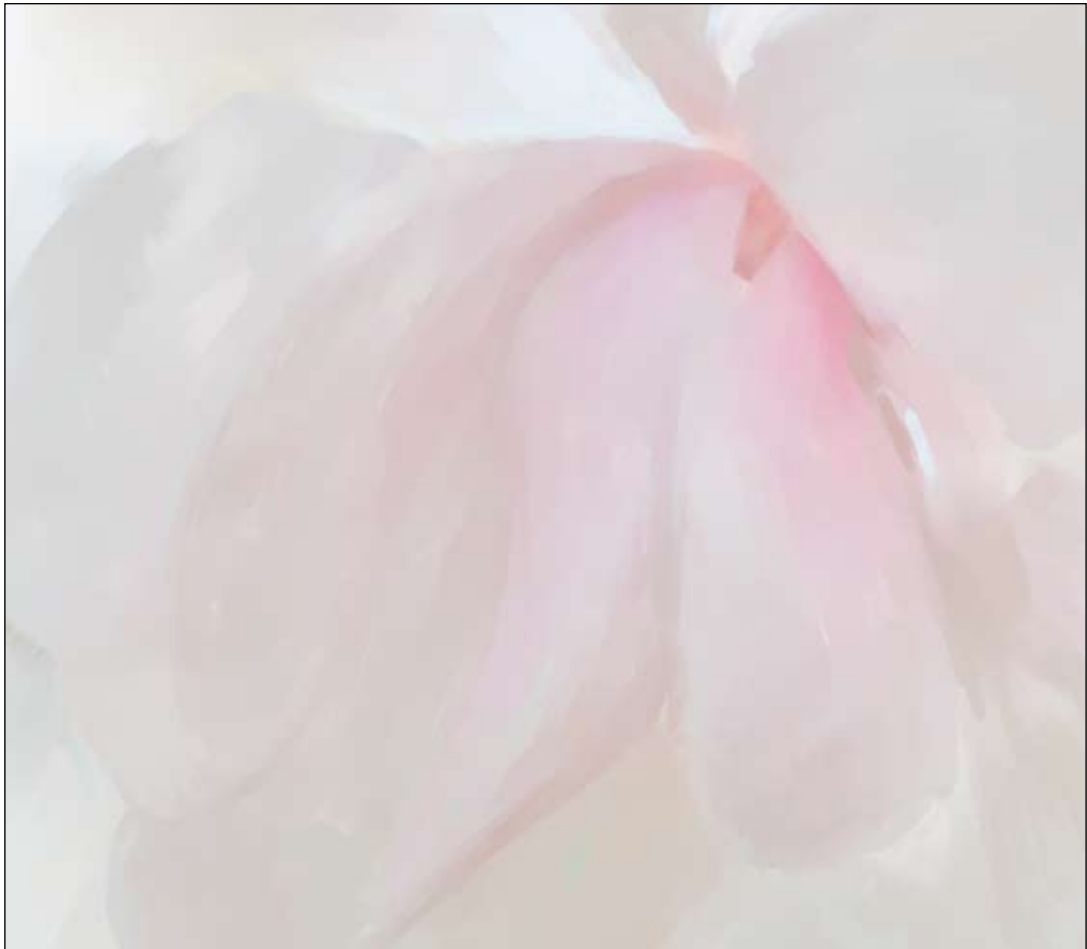


8. Paint the whole picture very lightly with this soft textured brush, avoid the hard edge.
9. Change the clone source to the Magnolia B original
10. File> Clone Source> Magnolia B
11. Paint the remainder of the picture from this source with the same brush.
12. Now blend the whole picture by using the brush with the Resat slider at zero so that it picks up no color from the photograph but acts as a blender. (The Resat slider is on the Properties bar)
13. Make the brush size 30, opacity 46% and resat 60%.
14. Clone the flower petals in, following the lines of the petals paying particular attention to the changes in color or tone.



15. Swop the clone source again to paint the other flower.
16. Change the brush to size 30, opacity 20% and resat zero.
17. Blend over the picture to integrate the more detailed areas with the soft

- background.
18. Reduce the brush size to 8.8, opacity 60% resat 60% and paint over the edges of the petals and all the changes of tone, this will emphasize the outlines and shapes. Do this from both originals.
 19. Make the brush size 72, opacity 11% and resat 7% and blend over the background areas again to make the petals stand out.
 20. The left hand flower (Magnolia B) is rather too soft and with limited color so make the original the active document and create a Brightness and Contrast layer. Click the icon for Dynamic Plugins to access this. Increase the contrast and darken slightly.
 21. Return to the clone copy and clone over the left flower again, this will now be more colorful.



22. You may also wish to add additional color, if so, untick the clone color option in the Colors palette and select a light pink color. Paint this over the petals that need more color and then blend in with the brush at zero resat.
23. Return to cloning and tidy any rough areas with the brush size 35, opacity 20% and resat 7%.

